

IGEL ENTERPRISE MANAGEMENT PACK

Extending the power and utility of IGEL-powered software-defined endpoints

IGEL Enterprise Management Pack software extends the value and capabilities of IGEL Workspace Edition for simple, smart, and secure software-defined endpoints. Featuring multiple extensions to the Universal Management Suite (UMS) software, Enterprise Management Pack includes additional functionality that many enterprises will find extremely useful, on all or a subset of their IGEL-powered software-defined endpoints.

It is available as a 1-, 3-, or 5-year subscription on any endpoint powered by IGEL Workspace Edition software.



Workspace Edition
Software

Enterprise Management Pack

IGEL OS + Endpoints

IGEL UMS Management Platform

IGEL UMS Extensions



Any 64-bit x86 device



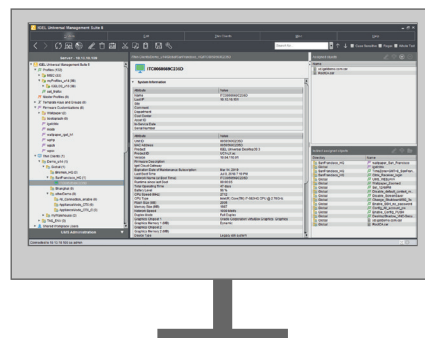
Portable x86 devices



IGEL endpoint devices

IGEL and other all-in-one devices

- Simple, Smart, Secure
- Secure read-only file system
- Over 90+ integrated technologies
- Multimedia Codec-Pack



- Easy, profile-based drag-and-drop configuration and management
- Highly scalable
- Service/system mgmt. integration
- REST API for 3rd party integrations
- HA/disaster recovery
- Custom devices, applications and protocols support



Cloud Gateway for remote management



Shared user workspace support



Advanced asset management

One Console for Simple, Smart, and Secure Network-Wide Management and Control

With Enterprise Management Pack, organizations benefiting from the control and optimization of IGEL-powered software-defined endpoints can use the Enterprise Management Pack UMS extensions to extend the reach of UMS to devices near and far, and devices running other operating systems beyond just IGEL OS. IGEL's vast community of integrated technology partners (80+ and counting) helps ensure a broad range of solutions. With the UMS user interface that is second to none in its simplicity and "minimal touch" operation, Enterprise Management Pack further enables IGEL UMS to serve as your single console for unified management and control across your entire enterprise. Now one network administrator can easily take on the role of a team of administrators from a single UMS console.

Enterprise Management Pack includes the following key software elements:

IGEL Cloud Gateway

IGEL Cloud Gateway enables full UMS management and control of IGEL software-defined endpoints located “off network” in remote locations including home offices, remote campuses, or for mobile “road warrior” workers. It extends the reach of UMS without requiring a VPN connection to ensure strong management and control of all your software-defined endpoints, regardless of their location.

Flexible User-Specific Configurations by Policy

Enterprise Management Pack allows user-specific configurations based on setting profiles created in the UMS and linked to user accounts within Active Directory. Typical applications include shift work, university labs and classrooms, or in call centers, where different people use the same device and need their own individual settings, or in roaming environments, where users frequently switch workstations.

Asset Inventory Tracking

Enterprise Management Pack includes an asset inventory tracker feature that allows insight and status checking of peripheral devices attached to IGEL-managed software-defined endpoints. Not only does the inventory tracker provide insight for these devices when initially attached, it continues to track and offer status as attached devices move from any one IGEL-managed endpoint to another within the organization.

Mobile Device Management for Apple iOS Devices

This feature provides insight, configuration, and management capabilities across an organization's Apple iOS smartphones and other devices running iOS. For organizations that have standardized on iOS for hand-held computing, it enables centralized management and control of an even greater range of company-managed devices.



Request a demo: igel.com/download

Revolutionary in its
Simplicity